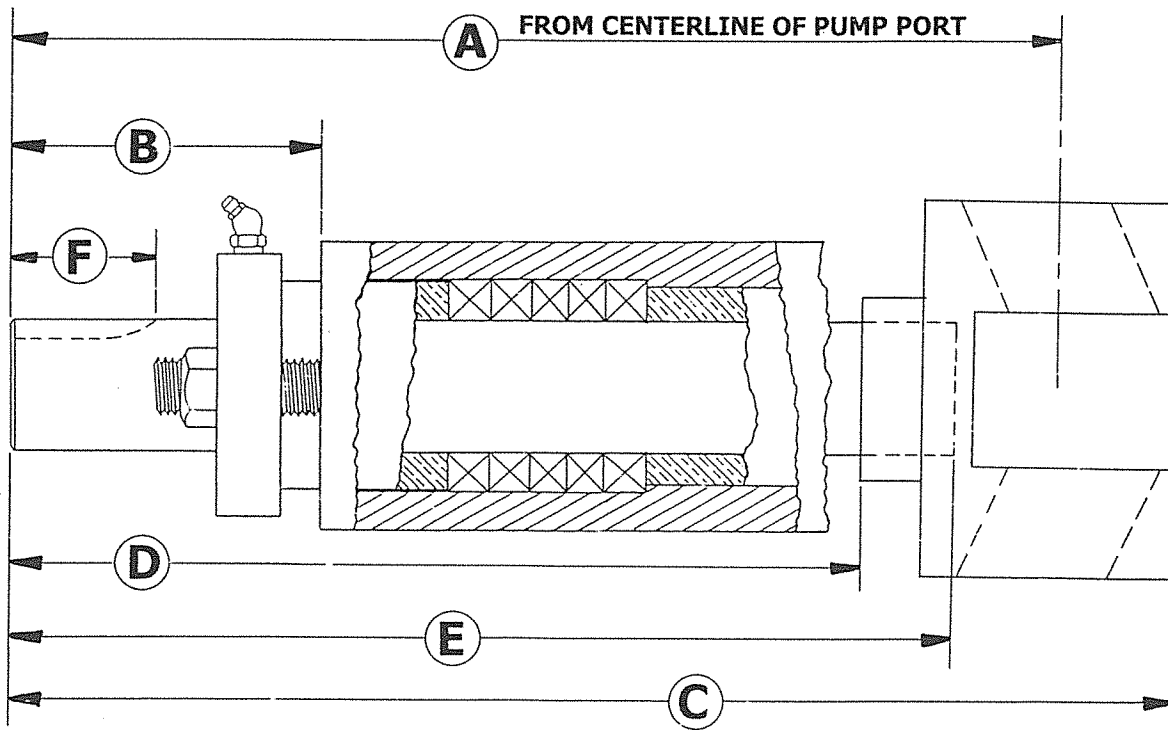


CONVERSION CHART FOR DETERMINING PUMP SHAFT LENGTH

	"A" TO DRAWING MEASURED FROM CENTERLINE OF PUMP PORT TO END OF SHAFT	"B" VISIBLE MEASURED FROM MACHINED FACE OF STUFFING BOX TO END OF SHAFT	"C" OVERALL LGTH MEASURED FROM MACHINED FACE OF ROTOR TO END OF SHAFT	"D" SHAFT IN ROTOR MEASURED FROM MACHINED FACE OF ROTOR "HUB" TO END OF SHAFT	"E" SHAFT ONLY MEASURED FROM END OF SHAFT TO END OF SHAFT	"F" KEYWAY OVERALL LENGTH OR ADVISE
MODEL 20						
"M" OR "T"	8-3/8"	4"	9-3/4"	7-1/4"	8-3/32"	3/4"
"BD" OR "MO"	10-13/16"	6-1/2"	12-3/16"	9-3/4"	10-17/32"	3/4"
"OSBD"	14-1/4"	10"	15-1/2"	13-1/4"	14-1/16"	3/4"
MODEL 40						
"M" OR "T"	11-9/16"	3-3/4"	13-3/8"	9-5/16"	10-3/4"	1-1/2"
"BD" OR "MO"	13-1/16"	5-3/16"	14-3/4"	10-3/4"	12-3/16"	2"
"OSBD"	17-1/4"	9-5/16"	19"	14-7/8"	16-3/8"	2"
MODELS 80/100/120						
"T" OR "TS"	12-3/4"	5-1/2"	14-3/4"	10-1/2"	12-1/8"	#A WDRF
"M" "BD" OR "MO"	15-1/4"	7-1/2"	17-1/4"	12-1/2"	14-7/16"	2"
"OSBD"	17-1/4"	9-7/8"	19-1/2"	14-7/8"	16-5/8"	3"
"OSMO"	20"	12-3/8"	22"	17-3/8"	19-1/4"	3"
MODELS 200/220						
"M" "BD" "MO" "T"	21"	9"	24-1/4"	17-1/4"	19-1/2"	3"
"OSMO"	25"	13"	28-1/4"	21-1/4"	23-1/2"	3"



SHAFT LENGTH CONVERSION CHART



36 EAST LAWTON STREET
TORRINGTON, CONNECTICUT
U.S.A. 06790-6712
PH: 860.482.8581 FX: 8435

INCORPORATED

DRAWN BY: HLN 08/06/02

APPROVED BY: *[Signature]* 6 AUG 2002

J8602